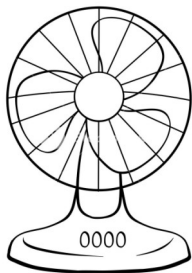
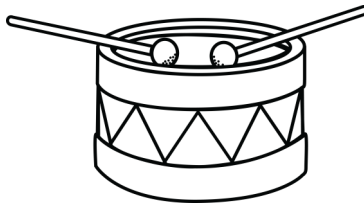


K-Gr.1

# Beginning Sound Match Cut & Paste Booklet



f



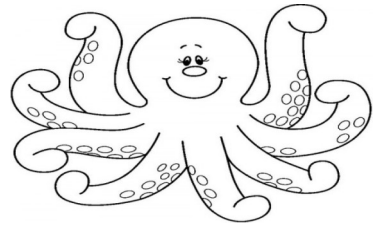
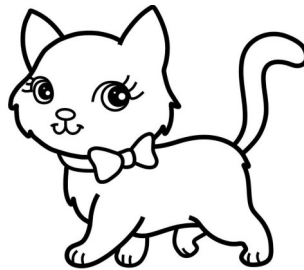
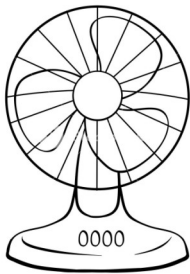
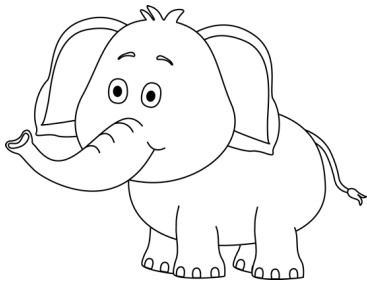
d



p

# Beginning Sound Match

- Match the beginning sound to the correct pictures.
- Cut out the letters below.
- Colour the pictures.



**c**

**f**

**l**

**o**

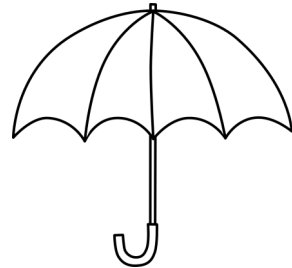
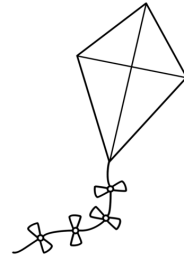
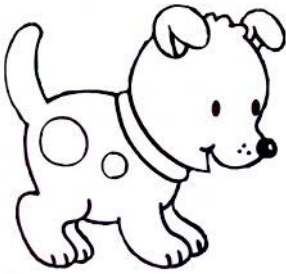
**e**

**h**

Pasted them in the correct  
boxes at the top

# Beginning Sound Match

- Match the beginning sound to the correct pictures.
- Cut out the letters below.
- Colour the pictures.



u

t

d

k

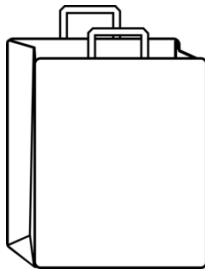
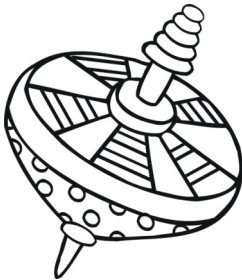
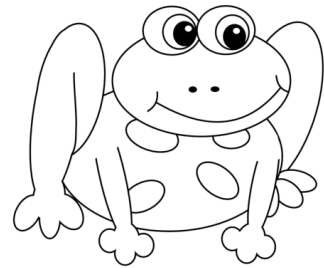
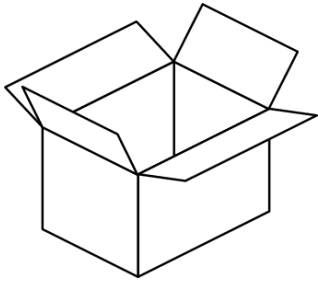
b

f

Pasted them in the correct  
boxes at the top

# Beginning Sound Match

- Match the beginning sound to the correct pictures.
- Cut out the letters below.
- Colour the pictures.



**f**

**b**

**h**

**c**

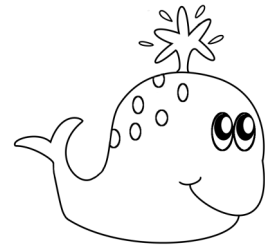
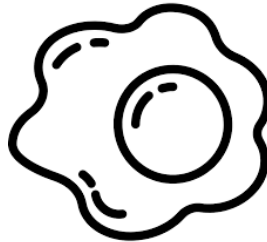
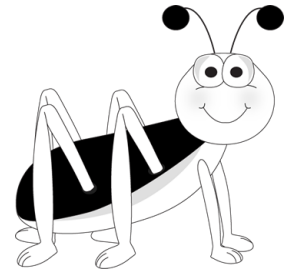
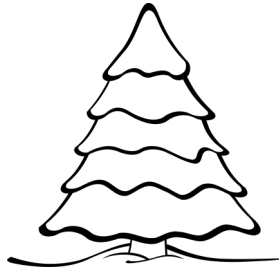
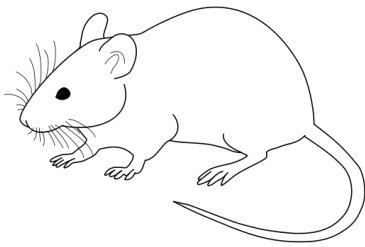
**b**

**t**

Pasted them in the correct  
boxes at the top

# Beginning Sound Match

- Match the beginning sound to the correct pictures.
- Cut out the letters below.
- Colour the pictures.



w

b

m

e

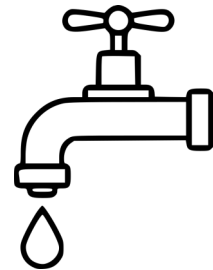
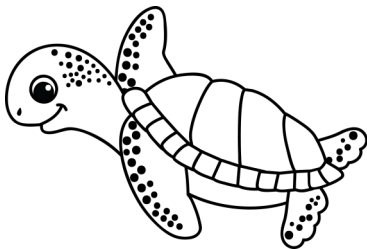
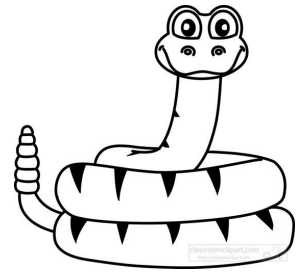
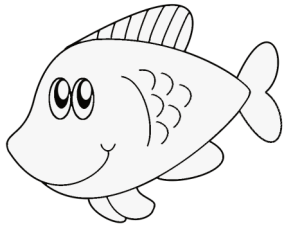
m

t

Pasted them in the correct  
boxes at the top

# Beginning Sound Match

- Match the beginning sound to the correct pictures.
- Cut out the letters below.
- Colour the pictures.



t

f

j

b

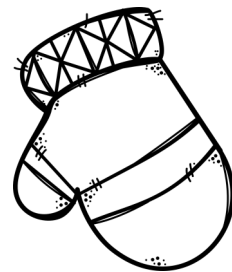
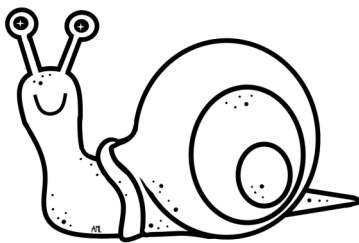
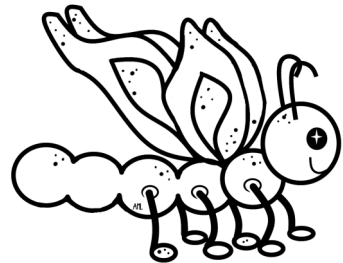
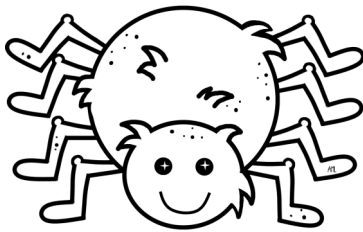
s

t

Pasted them in the correct boxes at the top

# Beginning Sound Match

- Match the beginning sound to the correct pictures.
- Cut out the letters below.
- Colour the pictures.



**m**

**s**

**b**

**s**

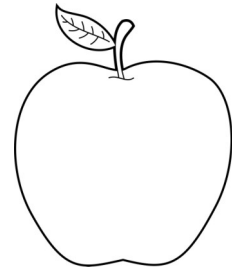
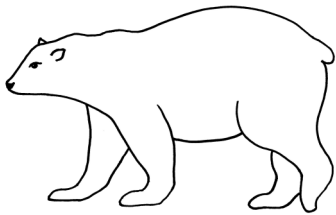
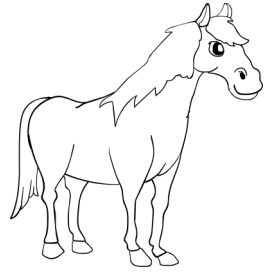
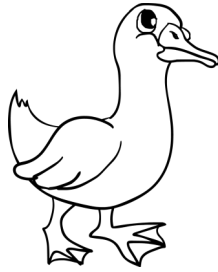
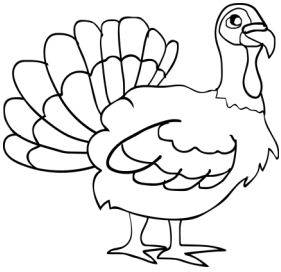
**m**

**s**

Pasted them in the correct  
boxes at the top

# Beginning Sound Match

- Match the beginning sound to the correct pictures.
- Cut out the letters below.
- Colour the pictures.



**t**

**d**

**b**

**p**

**a**

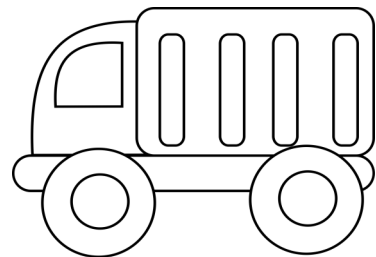
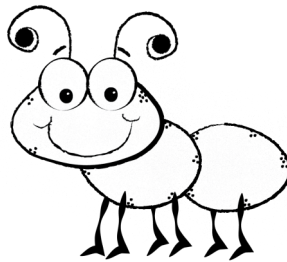
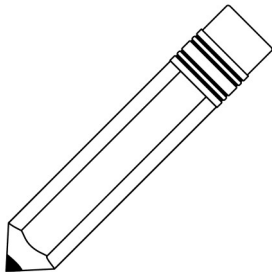
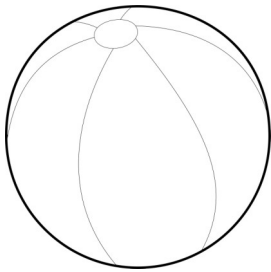
**h**

Pasted them in the correct  
boxes at the top



# Beginning Sound Match

- Match the beginning sound to the correct pictures.
- Cut out the letters below.
- Colour the pictures.



t

f

b

p

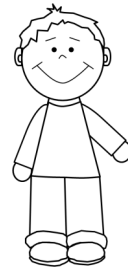
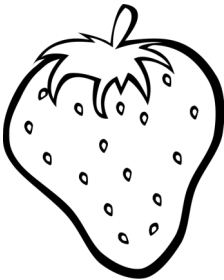
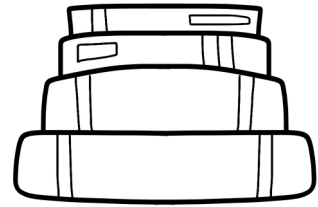
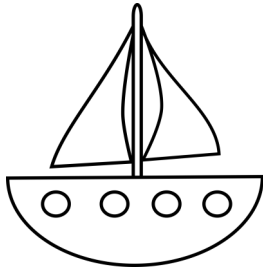
a

b

Pasted them in the correct  
boxes at the top

# Beginning Sound Match

- Match the beginning sound to the correct pictures.
- Cut out the letters below.
- Colour the pictures.



**b**

**g**

**b**

**s**

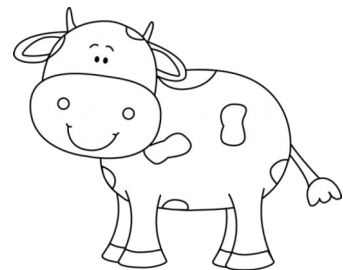
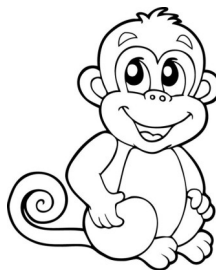
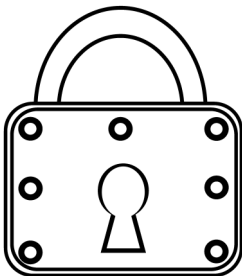
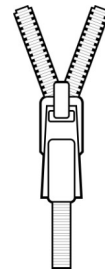
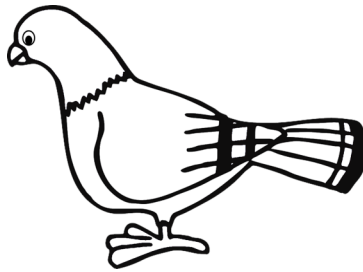
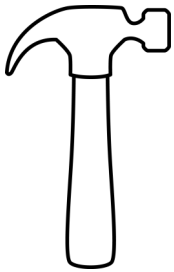
**s**

**b**

Pasted them in the correct  
boxes at the top

# Beginning Sound Match

- Match the beginning sound to the correct pictures.
- Cut out the letters below.
- Colour the pictures.



**b**

**c**

**z**

**l**

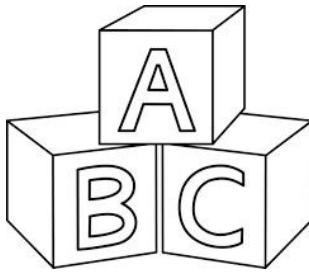
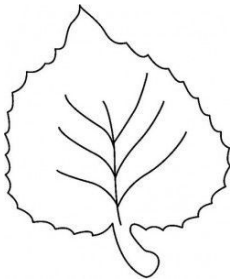
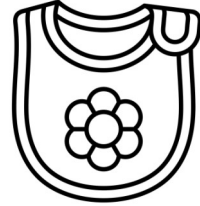
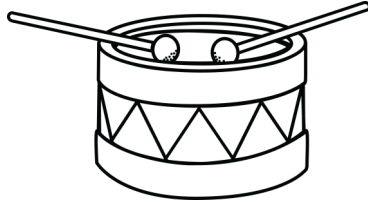
**m**

**h**

Pasted them in the correct  
boxes at the top

# Beginning Sound Match

- Match the beginning sound to the correct pictures.
- Cut out the letters below.
- Colour the pictures.



**b**

**d**

**l**

**b**

**d**

**s**

Pasted them in the correct  
boxes at the top